

Gradus XT-300

Remote control system



The innovative **Gradus XT-300** laboratory water purification system is entirely managed through remote controllers equipped with a touch screen and dispenser. The system includes one Flow Point XR controller as a standard, delivering ultrapure Grade 1 water. The Flow Point GR controller, providing pure Grade 2 water, is available as an additional option. The system can be expanded with *up to three* more controllers, according to the user's choice.

Superior quality of ultrapure and pure water is achieved directly from tap water source. The **Gradus XT-300** offers flexibility in placement options - it can be mounted on the wall or situated under the bench, optimizing space in your work area. Alternatively, if space permits, it can also be placed directly on a laboratory bench.

The connection between the main unit and the remote dispenser extends to 5 meters (optimally 3 m).

Available in two main configurations - electrodeionization (EDI) and deionization.

FEATURES



INTUITIVE TOUCHSCREEN DISPLAY

- 8-inch color touchscreen.
- Equipped with USB and Ethernet connectivity.
- Data can be stored on a USB-C drive.
- Touchscreen is designed for glove compatibility.

DETAILED PROCEDURES

- Clear and comprehensive information available in various languages.
- Alerts and notifications appear on the main screen, providing a thorough description of the necessary actions.
- Continuous monitoring of system operations.
- Dispense report preparation.

ADJUSTABLE DISPENSE FLOW REGULATION

- Delivers water at a rate of up to 2 liters per minute, minimizing interruptions.
- Volumetric dispensing facilitates quick reissuance of specified volumes.
- Offers volumetric control ranging from 10 ml to 100 liters.
- Features a drop-by-drop dispensing function.



SPECIFICATION



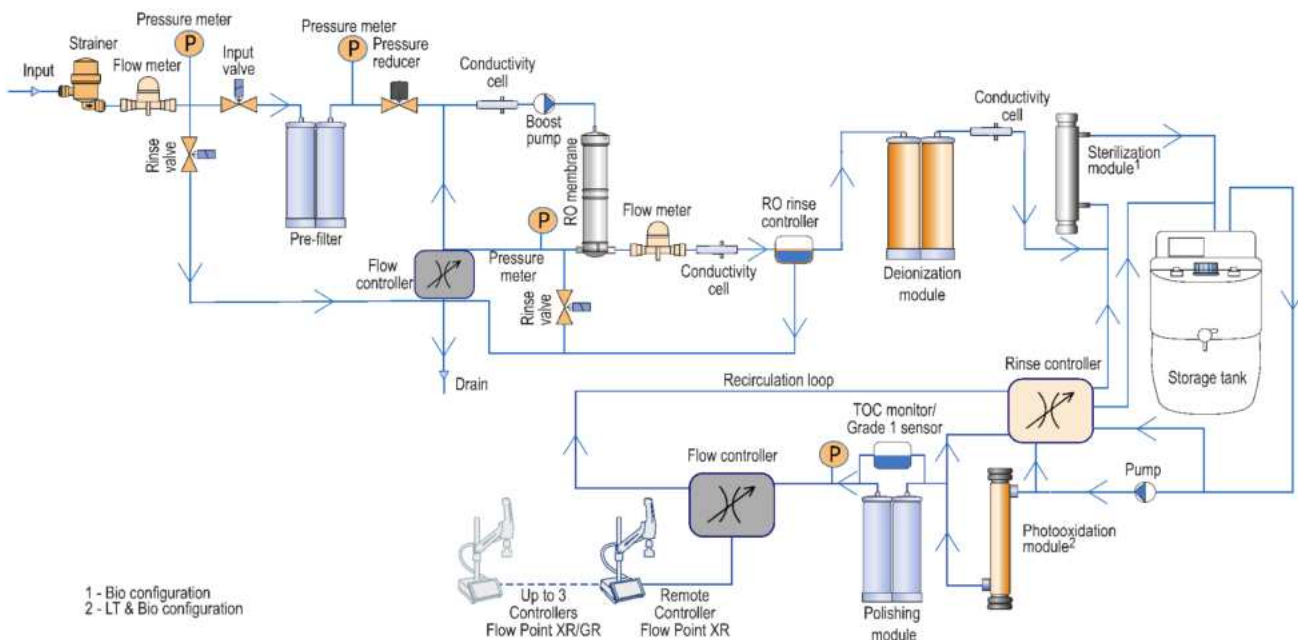
	<i>Trace</i>	<i>LT</i>	<i>Bio</i>
Grade 1 water resistivity at 25 °C	18.2 MΩ x cm	18.2 MΩ x cm	18.2 MΩ x cm
Grade 1 water conductivity at 25 °C	0.055 µS/cm	0.055 µS/cm	0.055 µS/cm
Grade 2 water conductivity at 25 °C	≤0.1 µS/cm	≤0.1 µS/cm	≤0.1 µS/cm
Total Organic Carbon (TOC) level	<10 ppb	<3 ppb*	<3 ppb*
RNase	-	-	<1 pg/mL
DNase	-	-	<5 pg/mL
Bacteria	<0.01 CFU/mL	<0.01 CFU/mL	<0.01 CFU/mL
Endotoxins	<0.15 EU/mL	<0.15 EU/mL	<0.001 EU/m
Particles >0.22 µm	<1/mL	<1/mL	<0.05/mL
Nominal flow to storage tank	5 / 10 / 15 L/h**		
Volumetric dispense	0.001 L to 100 L***		
Adjustable dispense rate	From 2 L/min to drop-by-drop		
Water system Dimensions (WxDxH), cm	33*45*63 cm		
Remote water dispenser Dimensions (WxDxH), cm	Base: 20*26*12 cm Width: 26-40 cm Height: 55-78 cm Tube: 80 cm		

* In appropriate operating conditions <2 ppb, otherwise normally <3 ppb.

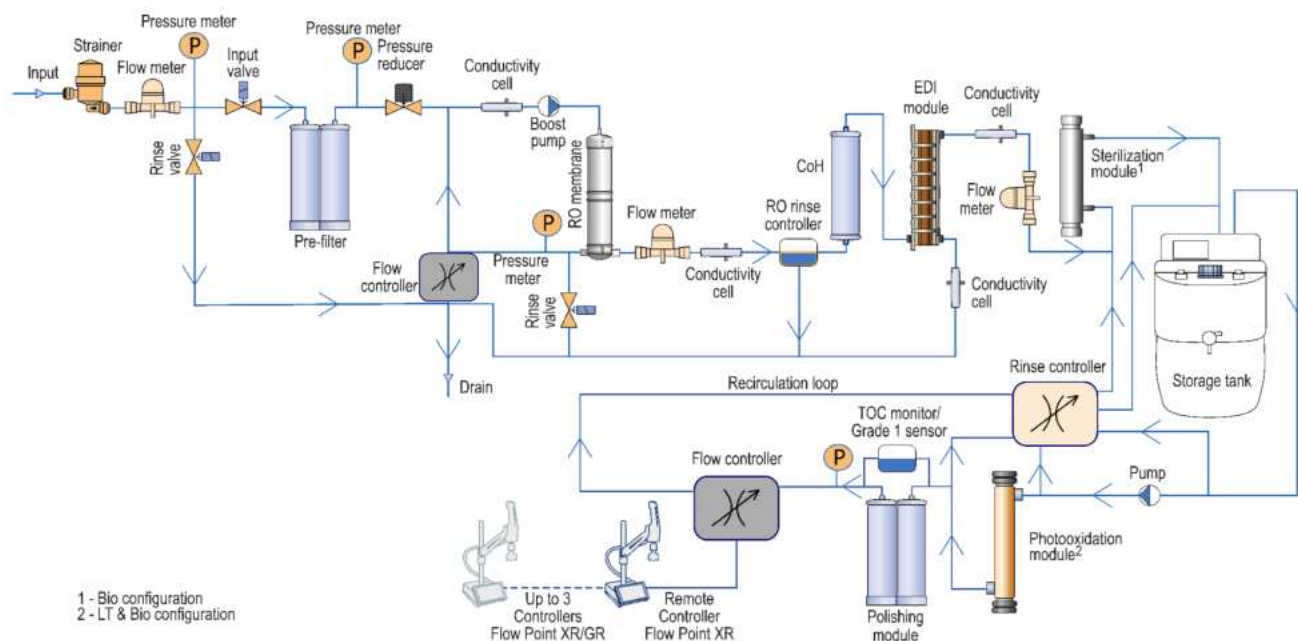
** Depends on the tank volume.

*** Depends on the tank volume.

FLOWCHART - GRADUS XT-300



FLOWCHART - GRADUS XT-300 EDI



ORDERING INFORMATION



System	Capacity 5 L/h Part no.	Capacity 10 L/h Part no.	Capacity 15 L/h Part no.
Gradus XT-300 EDI Trace	XT-2021	XT-2031	XT-2041
Gradus XT-300 EDI LT	XT-2023	XT-2033	XT-2043
Gradus XT-300 EDI Bio	XT-2025	XT-2035	XT-2045
Gradus XT-300 Trace	-	XT-1001	-
Gradus XT-300 LT	-	XT-1003	-
Gradus XT-300 Bio	-	XT-1005	-
Flow Point XR	10526	Remote controller for <i>Grade 1</i> water dispense	
Flow Point GR	10527	Remote controller for <i>Grade 2</i> water dispense	

CONSUMABLES



Consumable	Part no.	Comments
Pre-filter Q w/ quick connectors	10411	
Deionization Q w/ quick connectors	10311	Non-EDI configuration
Polishing QC w/ quick connectors	10033	
Replacement sterilization UV bulb	10017	Bio configuration
UV photooxidation bulb	10018	LT, Bio configurations
Point-of-use microfilter	10013	Trace, LT configurations
Point-of-use ultrafilter	10120	Bio configuration
Tank sanitization UV bulb	410175	

ACCESSORIES



Component	Part no.	Comments
Water storage tank "Pro", 30 L	11015	With base, tap and multipoint level sensor
Water storage tank "Comfort", 60 L	10007L	With base, tap and multipoint level sensor
Water storage tank "Comfort", 100 L	10027L	With base, tap and multipoint level sensor
External sediment pre-filter set	10170	Carbon/PP, PP 1µm. W/manometer
External sediment pre-filter set	10177	Anti-Scale, Carbon/PP, PP 1µm. W/manometer
Filter set for 10170	410222	
Filter set for 10177	410377	
Tank CO2 trap with microfilter	13007	
Automatic sanitization module for tank "Pro"	10315	
Automatic sanitization module for tank	410205	For volume 60-100 L
Air filter for storage tank	12001	
0.22 µm bacteria air filter	12002	For water storage tank
AquaStop	410226	Water leakage protection system
Sanitization cartridge	10511	Shipped separately due to shipment of dangerous cargo
DQ/IQ/OQ/PQ documentation	410144	